

# SALES & ENGINEERING DATA

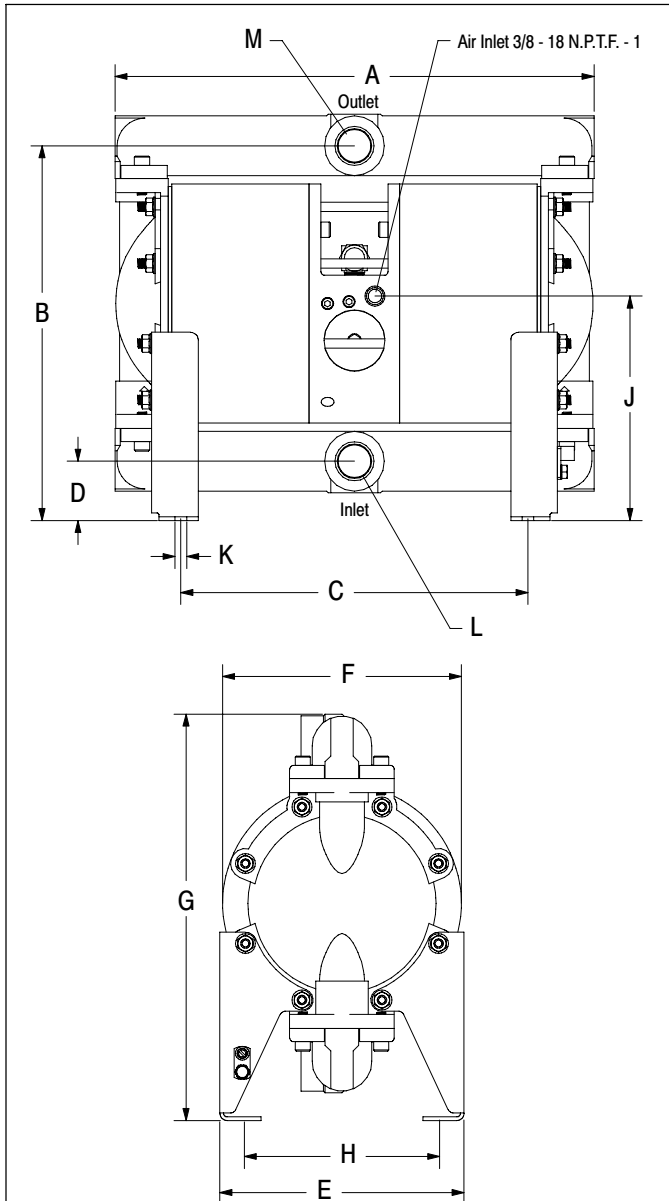
RATIO SERIES:	<b>3:1</b>
FLUID P.S.I. RANGE:	<b>60 - 300</b>

## PH10A-XSS-XXT

### 1" HIGH PRESSURE METALLIC DIAPHRAGM PUMP

RELEASED: 7-7-00  
 REVISED: 6-10-10  
 (REV. F) S-1193

#### DIMENSIONAL DATA



#### DIMENSIONS

A 16-1/16" (407 mm)	E 8-3/16" (208 mm)	J 7-9/16" (191 mm)
B 12-9/16" (319 mm)	F 8" (203 mm)	K 13/32" (10 mm)
C 11-5/8" (295 mm)	G 13-5/8" (346 mm)	L see below
D 2" (50 mm)	H 6-9/16" (166 mm)	M see below

	"L" Material Inlet	"M" Material Outlet
PH10A-ASS-XXT	1 - 11-1/2 N.P.T.F. - 1	1 - 11-1/2 N.P.T.F. - 1
PH10A-BSS-XXT	Rp1 (1 - 11 BSP parallel)	Rp1 (1 - 11 BSP parallel)

NOTE: Dimensions are shown in inches and (mm), supplied for reference only and are typically rounded up to the nearest 1/16 inch.

#### SPECIFICATIONS

##### CONSTRUCTION

Model Series	PH10A-XSS-XXT
Pump Type	Metallic, Air Operated, High Pressure, Double Diaphragm
Ratio	3:1
Material Inlet / Outlet (female)	
models PH10A-ASS-XXT	1 - 11-1/2 N.P.T.F. - 1
models PH10A-BSS-XXT	Rp 1 (1 - 11 BSP parallel)
Air Inlet	3/8 - 18 N.P.T.F. - 1
Air Exhaust	3/8 - 18 N.P.T.F. - 1
Weight	94.73 lbs (42.97 kgs)
Air Section Service Kit	637338
Fluid Section Service Kit	
models PH10A-XSS-XHT	637339-1
models PH10A-XSS-XST	637339

##### PERFORMANCE

Air Inlet Pressure Range	20 - 100 p.s.i. (1.4 - 6.9 bar)
Fluid Pressure Range	60 - 300 p.s.i. (4.1 - 20.7 bar)
Maximum Flow Rate (flooded inlet)	26 g.p.m. (98.4 l.p.m.)
Maximum Particle Size	1/8" dia. (3.2 mm)
Maximum Temperature Limits (diaphragm / ball / seal material)	
Nitrile	10° to 180° F (-12° to 82° C)
PTFE	40° to 225° F (4° to 107° C)
Displacement / Cycle @ 100 p.s.i.	0.06 gal. (0.23 lit.)
Noise Level @ 70 p.s.i. - 60 c.p.m. ①	84.5 db(A) ②

##### Notes:

- ① Tested with 93110 muffler installed.
- ② The pump sound pressure level has been updated to an Equivalent Continuous Sound Level ( $L_{Aeq}$ ) to meet the intent of ANSI S1. 13-1971, CAGI-PNEUROP S5.1 using four microphone locations.

##### ACCESSORIES:

67142 Wall Mount Bracket

**PERFORMANCE CURVES**

