

PARTS LIST / 6662AX-X-C FLUID SECTION

FLUID SECTION SERVICE KITS

☆ KITS INCLUDE: BALLS (See Ball Option, refer to -XX in Chart Below), DIAPHRAGMS (See Diaphragm Option, refer to -XX in Chart Below), 93706-1 Key-Lube grease, plus "O" Ring items: 2, 3, 4, 19 and 33.

SEAT OPTIONS 6662XX-XXX-C				BALL OPTIONS 6662XX-XXX-C					
"21"				☆ "22" (2-1/2" dia.) (Service Kit -XX)					
-XXX	Seat	Qty	[Mtl]	-XXX	Ball (4)	[Mtl]	-XXX	Ball (4)	[Mtl]
-2XX	95715	(4)	[SS]	-X1X	93358-1	[N]	-X5X	93358-5	[E]
-3XX	93245-1	(4)	[P]	-X2X	93358-2	[B]	-X8X	93358-8	[U]
-4XX	93245-2	(4)	[K]	-X3X	93358-3	[V]	-XEX	93358-A	[SP]
-8XX	93308	(4)	[SH]	-X4X	93358-4	[T]			

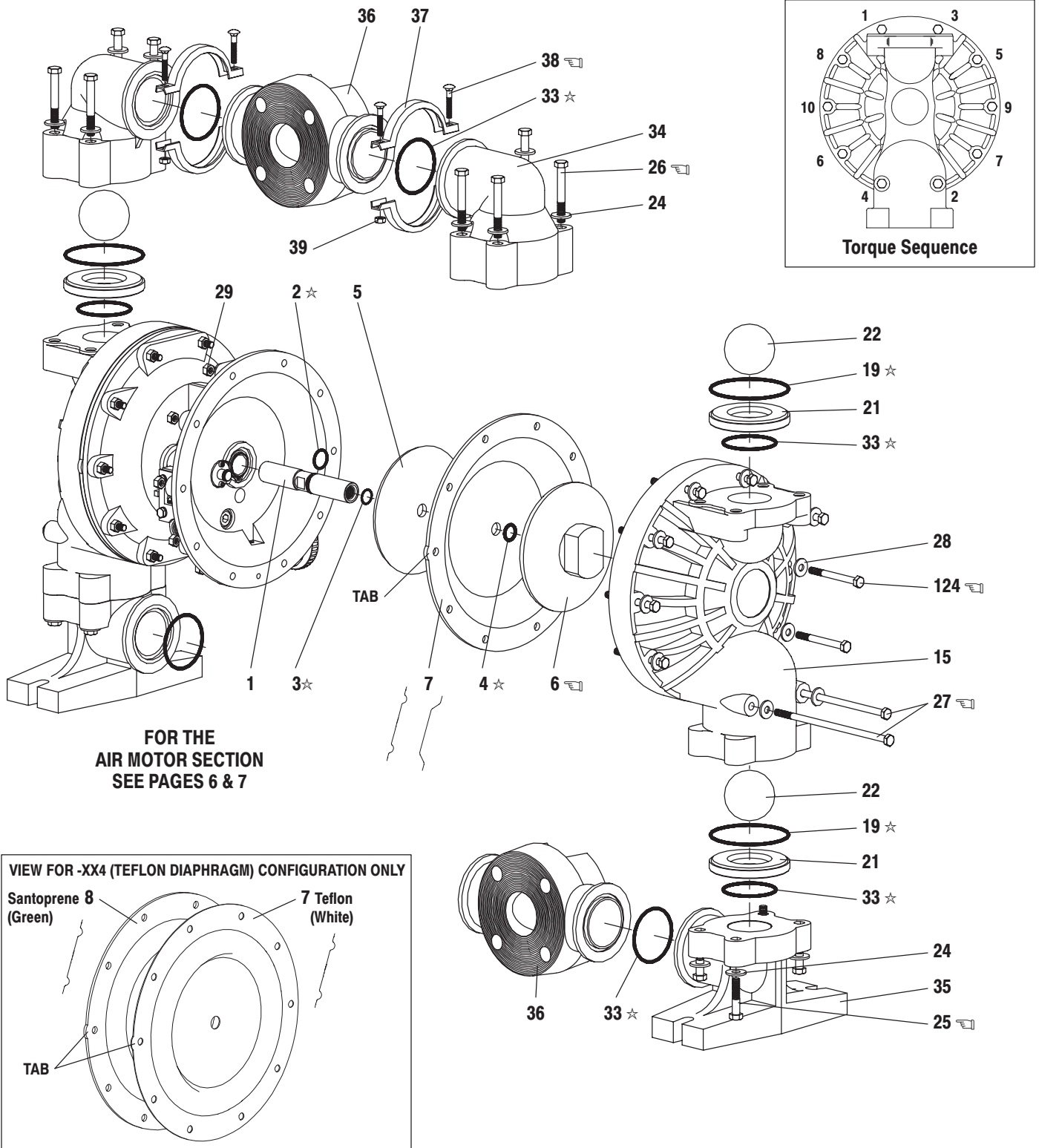
DIAPHRAGM OPTIONS 6662XX-XXX-C												
-XXX	☆ SERVICE KIT		☆ "7" / "8"		☆ "3"		☆ "4"		☆ "19"		☆ "33"	
	-XX = (Ball)	-XX = (Diaphragm)	Diaphragm (2)	[Mtl]	"O" Ring (2) 3/4" o.d.	[Mtl]	"O" Ring (2) 7/8" o.d.	[Mtl]	"O" Ring (4) 4" o.d.	[Mtl]	"O" Ring (8) 2-3/4" o.d.	[Mtl]
-XX1	637165-X1		92755-1	[N]	Y325-16	[B]	Y325-208	[B]	Y325-240	[B]	Y325-230	[B]
-XX2	637165-X2		94615-G	[B]	Y325-16	[B]	Y325-208	[B]	Y325-240	[B]	Y325-230	[B]
-XX3	637165-X3		92755-3	[V]	Y328-16	[T]	Y328-208	[T]	Y327-240	[V]	Y327-230	[V]
-XX4	637165-X4		94617 / 94616	[T/SP]	Y328-16	[T]	Y328-208	[T]	93364-1	[T]	93363-1	[T]
-XX5	637165-X5		92755-5	[E]	Y328-16	[T]	Y328-208	[T]	93362-1	[E]	92761	[E]
-XX9	637165-X9		94615-9	[H]	Y328-16	[T]	Y328-208	[T]	Y327-240	[V]	Y327-230	[V]
-XXB	637165-XB		94615-A	[SP]	Y328-16	[T]	Y328-208	[T]	93362-1	[E]	92761	[E]

MANIFOLD / FLUID CAP MATERIAL OPTIONS 6662XX-XXX-C						
ITEM	DESCRIPTION (Size in inches)	Qty	POLYPROPYLENE 6662X3-		P.V.D.F. 6662X4-	
			Part No.	[Mtl]	Part No.	[Mtl]
<input type="checkbox"/> 6	Diaphragm Nut	(2)	93243-1	[P]	93243-2	[K]
15	Fluid Cap	(2)	94905-1	[P]	93244-2	[K]
34	Manifold, Outlet (Top)	(2)	93242-1	[P]	93242-2	[K]
35	Manifold, Foot (Bottom)	(2)	93241-1	[P]	93241-2	[K]
36	Swivel	(2)	93240-1	[P]	93240-2	[K]

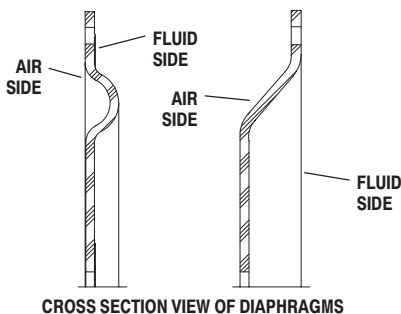
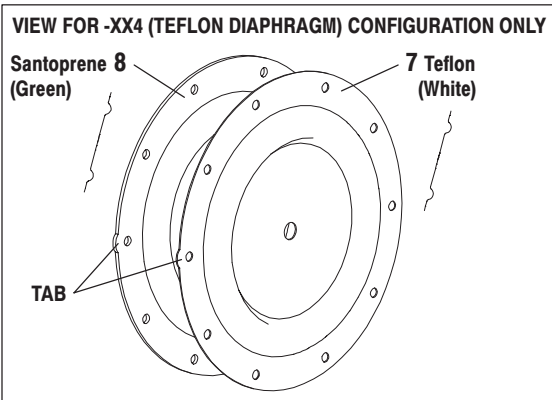
MATERIAL CODE
[B] = Nitrile
[C] = Carbon Steel
[E] = E.P.R.
[H] = Hytrel
[K] = P.V.D.F. (Kynar)
[N] = Neoprene
[P] = Polypropylene
[SH] = Hard Stainless Steel
[SP] = Santoprene
[SS] = Stainless Steel
[T] = Teflon
[U] = Polyurethane
[V] = Viton

COMMON PARTS									
ITEM	DESCRIPTION (Size in inches)	Qty	Part No.	[Mtl]	ITEM	DESCRIPTION (Size in inches)	Qty	Part No.	[Mtl]
<input type="checkbox"/> 1	Rod	(1)	98720-1	[C]	28	Washer (5/16")	(20)	93359-1	[SS]
★ 2	"O" Ring (3/32" x 1" o.d.)	(1)	Y330-117	[B]	29	Nut (5/16" - 18)	(20)	Y12-5-S	[SS]
5	Plate	(2)	92752	[C]	<input type="checkbox"/> 37	Clamp	(8)	93357-1	[SS]
24	Washer (3/8")	(16)	93360-1	[SS]	38	Bolt (1/4" - 20 x 1-1/2")	(8)	Y84-403-T	[SS]
25	Bolt (3/8" - 16 x 1-3/4")	(8)	Y6-68-T	[SS]	39	Nut (1/4" - 20)	(8)	Y12-4-S	[SS]
26	Bolt (3/8" - 16 x 2-3/4")	(8)	Y6-612-T	[SS]	124	Bolt (5/16" - 18 x 3-1/4")	(16)	Y6-514-T	[SS]
27	Bolt (5/16" - 18 x 7-3/4")	(4)	93366-1	[SS]					

PARTS LIST / 6662AX-X-C FLUID SECTION



**FOR THE
 AIR MOTOR SECTION
 SEE PAGES 6 & 7**



TORQUE REQUIREMENTS
 NOTE: DO NOT OVERTIGHTEN FASTENERS
 (6) Diaphragm Nut 65 - 70 ft. lbs (88.1 - 94.9 Nm), apply Loctite 271 to threads.
 (25, 26, 27 and 124) Fluid Caps/Manifold bolts 120 - 140 in. lbs. (13.6 - 15.8 Nm), apply Loctite Nickel Antizeize to threads.
 (38) Bolts 40 - 45 in. lbs (4.5 - 5.1 Nm).

LUBRICATION / SEALANTS
 ☆ Apply Key-Lube grease to all "O" rings, "U" Cups & mating parts

COLOR CODE		
MATERIAL	DIAPHRAGM COLOR	BALL COLOR
E.P.R.	Blue (-)	Blue (•)
HYTREL	Cream	N/A
NEOPRENE	Green (-)	Green (•)
NITRILE	Black	Red (•)
POLYURETHANE	N/A	Red
SANTOPRENE	Cream	Cream
SANTOPRENE (Backup)	Green	N/A
T.F.E. (Teflon)	White	White
VITON	Yellow (-)	Yellow (•)
	(-) STRIPE	(•) DOT

PARTS LIST / 6662AX-X-C AIR MOTOR SECTION

✓ Indicates parts included in 637118-C Air Section Service Kit.

SERVICE KIT NOTE: Service Kit 637118-C is a general repair kit for all 1" and larger ARO diaphragm pump air motors.

It contains extra "O" Rings and other parts that may not be needed to service this model.

ITEM	DESCRIPTION (Size in inches)	Qty	Part No.	[Mtl]
101	Motor Body (6662AX-XXX-C)	(1)	94744	[A]
	(6662BX-XXX-C)	(1)	94742	[C]
✓102	"O" Ring (1/16" x 1-1/4" o.d.)	(2)	Y325-24	[B]
□ 103	Sleeve	(1)	94528	[D]
✓104	Retaining Ring, TruArc (1-5/32" i.d.)	(2)	Y145-26	[C]
105	Screw (1/4" - 20 x 5/8")	(8)	Y6-42-T	[SS]
106	Lockwasher (1/4")	(8)	Y14-416-T	[SS]
107	Plate	(2)	93707-1	[SS]
✓108	Gasket (with notch)	(1)	92878	[B/NY]
□ 109	Piston	(1)	92011	[D]
✓110	"U" Cup (3/16" x 1-3/8" o.d.)	(1)	Y186-51	[B]
□ 111	Spool (6662AX-XXX-C)	(1)	92005	[A]
	(6662BX-XXX-C)	(1)	93047	[C]
□ 112	Washer (1.557" o.d.)	(5)	92877	[Z]
✓113	"O" Ring (small) (1/8" x 1-1/4" o.d.)	(5)	Y325-214	[B]
✓114	"O" Ring (large) (3/32" x 1-9/16" o.d.)	(6)	Y325-126	[B]
□ 115	Spacer	(4)	92876	[Z]

ITEM	DESCRIPTION (Size in inches)	Qty	Part No.	[Mtl]
□ 116	Spacer	(1)	92006	[Z]
✓117	Gasket	(1)	92004	[B/NY]
118	Pilot Rod	(1)	93309-2	[C]
✓119	"O" Ring (1/8" x 3/4" o.d.)	(4)	93075	[U]
120	Spacer	(3)	115959	[Z]
121	Sleeve Bushing	(2)	98723-2	[Bz]
✓122	"O" Ring (3/32" x 9/16" o.d.)	(2)	94820	[U]
✓123	Screw (#8 - 32 x 3/8")	(4)	Y154-41	[C]
126	Pipe Plug (1/2 - 14 N.P.T. x 17/32")	(1)	Y227-5-L	[C]
127	90° Street Elbow (3/4 - 14 N.P.T.)	(1)	Y43-5-C	[C]
128	Pipe Plug (1/8 - 27 N.P.T. x 1/4")	(1)	Y227-2-L	[C]
195	Button Head Screw (1/4" - 20 x 1/4")	(3)	94987	[SS]
201	Muffler	(1)	93139	[P]
231	Pipe Plug (6662BX-X only)	(2)	Y17-51-S	[SS]
✓	Key-Lube "O" Ring Lubricant	(1)	93706-1	
	10 Pak of Key-Lube		637175	

AIR MOTOR SECTION SERVICE

Service is divided into two parts - 1. Pilot Valve, 2. Major Valve.

GENERAL REASSEMBLY NOTES:

- Air Motor Section Service is continued from Fluid Section repair.
- Inspect and replace old parts with new parts as necessary. Look for deep scratches on metallic surfaces, and nicks or cuts in "O" rings.
- Take precautions to prevent cutting "O" rings upon installation.
- Lubricate "O" rings with Key-Lube grease.
- Do not over-tighten fasteners, refer to torque specification block on view.
- Re-torque fasteners following restart.

PILOT VALVE DISASSEMBLY

1. Remove (104) retaining ring.
2. Remove (123) screws and (122) "O" rings.
3. Remove (118) piston rod, (121) sleeve bushing, (119) "O" rings and (120) spacers from the (101) motor body.
4. Remove (103) sleeve and (102) "O" rings.

PILOT VALVE REASSEMBLY

1. Replace two (102) "O" rings if worn or damaged and reinstall (103) sleeve.
2. Install one of the (121) sleeve bushings, (119) "O" rings, (120) spacers and the remaining (121) bushing.
3. Carefully push (118) pilot rod into bushings etc. and retain on each end with the two (122) "O" rings, retain with (123) screws.
4. Replace (104) retaining rings.

MATERIAL CODE

- | | | |
|--------------------|---------------------|------------------------|
| [A] = Aluminum | [CI] = Cast Iron | [SS] = Stainless Steel |
| [B] = Nitrile | [D] = Acetal | [U] = Polyurethane |
| [Bz] = Bronze | [NY] = Nylon | [Z] = Zinc |
| [C] = Carbon Steel | [P] = Polypropylene | |

MAJOR VALVE DISASSEMBLY

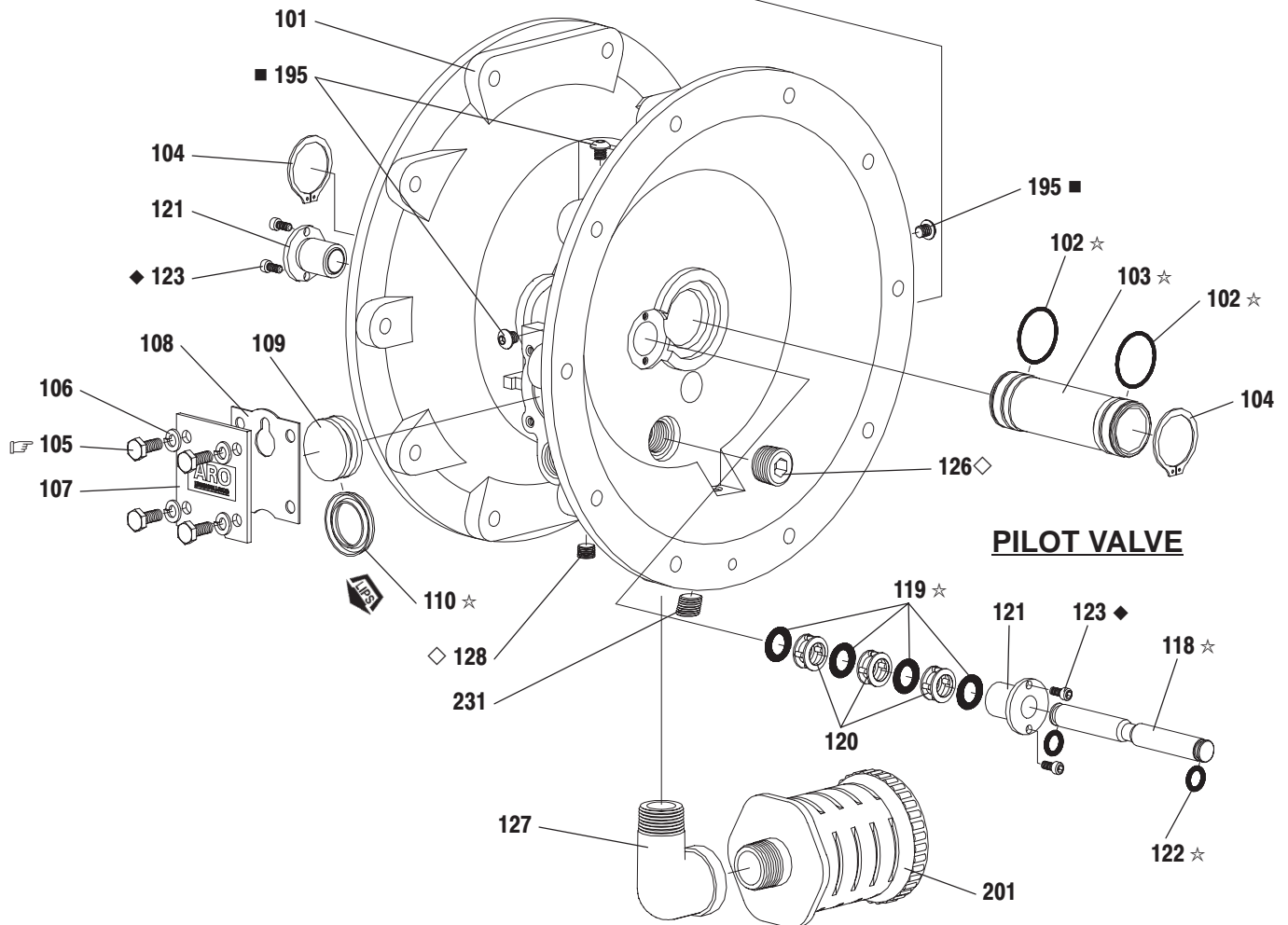
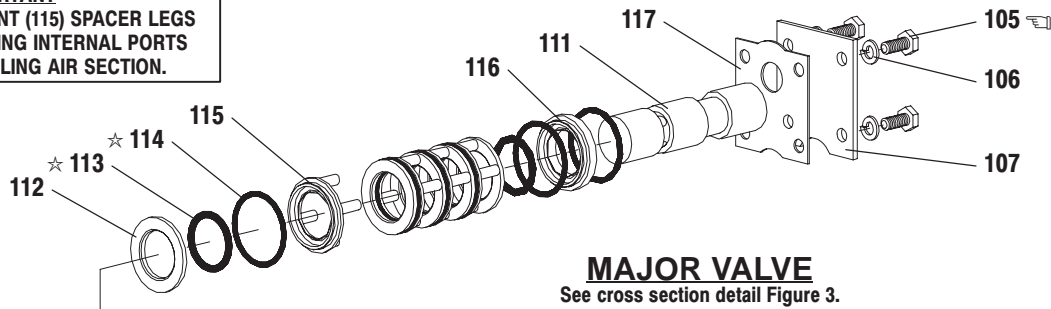
1. Remove (107) plate (or leg depending on model), (108 and 117) gaskets.
2. On the side opposite the air inlet, push on the inner diameter (111) spool. This will force the (109) piston out. Continue pushing the (111) spool and remove. Check for scratches and gouges.
3. Reach into the air section (exhaust side) and remove (116) spacer, (115) spacers, (113) "O" rings, (114) "O" rings, (112) washers, etc. Check for damaged "O" rings.

MAJOR VALVE REASSEMBLY

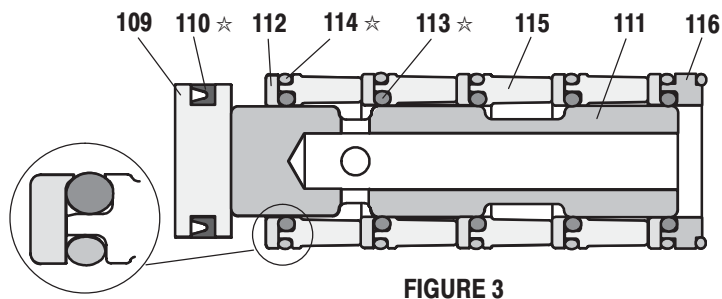
1. Replace (112) washer, (114) "O" ring and (113) "O" ring onto (115) spacer and insert etc.
NOTE: Be careful to orient spacer legs away from blocking internal ports.
2. Lubricate and carefully insert (111) spool.
3. Install (117) gasket and (107).
4. Lubricate and install (110) packing cup and insert (109) piston into (air inlet side) cavity, the (110) packing cup lips should point outward.
5. Install (108) gasket and replace (107).

PARTS LIST / 6662AX-X-C AIR MOTOR SECTION

IMPORTANT
 BE CERTAIN TO ORIENT (115) SPACER LEGS
 AWAY FROM BLOCKING INTERNAL PORTS
 WHEN REASSEMBLING AIR SECTION.



MAJOR VALVE CROSS SECTION DETAIL



TORQUE REQUIREMENTS
 NOTE: DO NOT OVERTIGHTEN FASTENERS
 (105) 40 - 50 in. lbs (4.5 - 5.6 Nm),
 apply Loctite Nickel Antiseize to threads.

LUBRICATION / SEALANTS

- ☆ Apply Key-Lube to all "O" rings, "U" Cups & mating parts.
- ◆ Apply Loctite 271 to threads.
- ◇ Apply pipe sealant to threads.
- Apply Dri-Loc 204 to threads.