

SALES & ENGINEERING DATA

RATIO SERIES: **1:1**

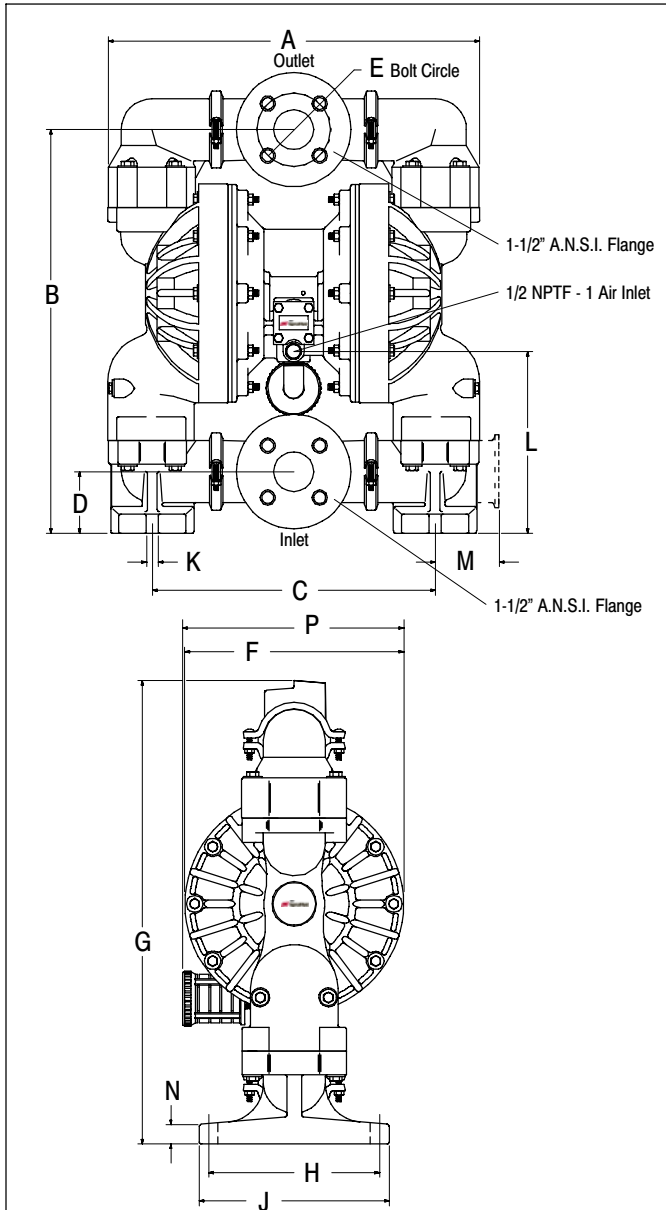
FLUID P.S.I. RANGE: **20 - 120**

6661T3-XXX-C THRU 6661U4-XXX-C

1-1/2" NON-METALLIC DIAPHRAGM PUMP

RELEASED: 1-10-97
 REVISED: 3-2-06
 (REV. 3) S-876

DIMENSIONAL DATA



DIMENSIONS

| | | | | | |
|---|-----------------|---|----------------|---|-----------------|
| A | 19-1/2" (495) | F | 11-1/2" (292) | L | 9-5/8" (244) |
| B | 21-5/16" (541) | G | 24-1/2" (622) | M | 3-3/8" (86) |
| C | 14-15/16" (379) | H | 9" (229) | N | 1-1/16" (27) |
| D | 3-1/4" (83) | J | 10-1/16" (256) | P | 11-11/16" (297) |
| E | 3-7/8" (98) | K | 5/8" (16) | | |

NOTE: Dimensions are shown in inches and (mm), supplied for reference only and are typically rounded up to the nearest 1/16 inch.

SPECIFICATIONS

CONSTRUCTION

| | |
|----------------------------------|---|
| Model Series | 6661T3-XXX-C thru 6661U4-XXX-C |
| Pump Type | Non-Metallic, Air Operated, Double Diaphragm |
| Ratio | 1:1 |
| Material Inlet / Outlet | 1-1/2" A.N.S.I. Class 150 Flange |
| Air Inlet (female) | 1/2 - 14 N.P.T.F. - 1 |
| Air Exhaust (female) | 3/4 - 14 N.P.T.F. - 1 |
| Weight | 6661T3-XXX-C 62 lbs (28.1 kgs) 6661T4-XXX-C 92 lbs (41.7 kgs) 6661U3-XXX-C 85 lbs (38.6 kgs) 6661U4-XXX-C 115 lbs (52.2 kgs) |
| Air Section Service Kit | 637118-C |
| Fluid Section Service Kit | 637165-XX |

6661T3 - X X X - C
637165 - X X X

Diaphragm Material
 Ball Material

EXAMPLE: Model 6661T3-344-C
 Fluid Section Service Kit is 637165-44

PERFORMANCE

| | |
|--|---------------------------------|
| Air Inlet Pressure Range | 20 - 120 p.s.i. (1 - 8.3 bar) |
| Fluid Pressure Range | 20 - 120 p.s.i. (1 - 8.3 bar) |
| Maximum Flow Rate (flooded inlet) | 100 g.p.m. (378.5 l.p.m.) |
| Maximum Particle Size | 1/4" dia. (6.4 mm) |
| Maximum Temperature Limits (diaphragm / ball / seal material) | |
| E.P.R. | -60° to 280° F (-51° to 138° C) |
| Hytrek | -20° to 150° F (-29° to 66° C) |
| Neoprene | 0° to 200° F (-18° to 93° C) |
| Nitrile | 10° to 180° F (-12° to 82° C) |
| Polypropylene | 35° to 150° F (2° to 66° C) |
| Polyurethane | 10° to 150° F (-12° to 66° C) |
| PVDF (Kynar) | 10° to 200° F (-12° to 93° C) |
| Santoprene | -40° to 225° F (-40° to 107° C) |
| T.F.E. (Teflon) | 40° to 225° F (4° to 107° C) |
| Viton | -40° to 350° F (-40° to 177° C) |
| Displacement / Cycle @ 100 p.s.i. | 0.67 gal. (2.54 lit.) |
| Noise Level @ 70 p.s.i. - 60 c.p.m.① | 77.7 db(A)② |

Notes:

- ① Tested with 93139 muffler installed.
- ② The pump sound pressure level has been updated to an Equivalent Continuous Sound Level (L_{Aeq}) to meet the intent of ANSI S1. 13-1971, CAGI-PNEUROP S5.1 using four microphone locations.

ACCESSORIES:

- 65010 Neoprene "O" Ring Air Motor Kit
- 65764 Viton "O" Ring Air Motor Kit
- 66084-1 Air Line Connection Kit

PERFORMANCE CURVES

6661XX-XXX-C 1-1/2" NON-METALLIC DIAPHRAGM PUMP

